

FEATHERWEIGHT<sup>®</sup>

2033 SERIES

# IMPORTANT SAFETY INSTRUCTIONS

## READ ALL INSTRUCTIONS BEFORE USING YOUR UPRIGHT VACUUM.

Always connect to a polarized outlet (one slot is wider than the other). Unplug from outlet when not in use and before conducting maintenance. When using an electrical appliance, basic precautions should be observed, including the following:

### **WARNING**

#### **TO REDUCE THE RISK OF FIRE, ELECTRIC SHOCK, OR INJURY:**

- » Always connect to a polarized outlet (one slot is wider than the other). Do not modify the polarized plug to fit a non-polarized outlet or extension cord.
- » Do not leave vacuum cleaner when it is plugged in. Unplug from outlet when not in use and before servicing.
- » Do not use outdoors or on wet surfaces.
- » Do not allow to be used as a toy. Close attention is necessary when used by or near children.
- » Do not use for any purpose other than described in this User's Guide. Use only manufacturer's recommended attachments.
- » Do not use with damaged cord or plug. If appliance is not working as it should, has been dropped, damaged, left outdoors, or dropped into water, have it repaired at an authorized service center.
- » Do not pull or carry by cord, use cord as a handle, close a door on cord, or pull cord around sharp edges or corners. Do not run appliance over cord. Keep cord away from heated surfaces.
- » Do not unplug by pulling on cord. To unplug, grasp the plug, not the cord.
- » Do not handle plug or vacuum cleaner with wet hands.
- » Do not put any object into openings. Do not use with any opening blocked; keep openings free of dust, lint, hair, and anything that may reduce air flow.
- » Keep hair, loose clothing, fingers, and all parts of body away from openings and moving parts.
- » Turn off all controls before plugging or unplugging vacuum cleaner.
- » Use extra care when cleaning on stairs.
- » Do not use to pick up flammable or combustible materials (lighter fluid, gasoline, kerosene, etc.) or use in areas where they may be present.
- » Do not use vacuum cleaner in an enclosed space filled with vapors given off by oil base paint, paint thinner, some moth proofing substances, flammable dust, or other explosive or toxic vapors.
- » Do not use to pick up toxic material (chlorine bleach, ammonia, drain cleaner, etc.).
- » Do not pick up anything that is burning or smoking, such as cigarettes, matches, or hot ashes.
- » Do not use without filters in place.
- » Do not pick up hard or sharp objects such as glass, nails, screws, coins, etc.
- » Use only on dry, indoor surfaces.
- » Keep appliance on a level surface.
- » Do not carry the vacuum cleaner while it is running.

## SAVE THESE INSTRUCTIONS FOR FUTURE USE

This model is for household use only.

### **THIS APPLIANCE HAS A POLARIZED PLUG**

To reduce the risk of electric shock, this appliance has a polarized plug (one blade is wider than the other). This plug will fit in a polarized outlet only one way. If the plug does not fit fully in the outlet, reverse the plug. If it still does not fit, contact a qualified electrician to install a proper outlet. Do not change the plug in any way.

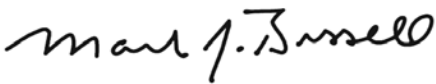
# Thanks for buying a BISSELL vacuum

We're glad you purchased a BISSELL vacuum. Everything we know about floor care went into the design and construction of this complete, high-tech home cleaning system.

Your BISSELL vacuum is well made, and we back it with a limited one-year warranty. We also stand behind it with a knowledgeable, dedicated Consumer Care department, so, should you ever have a problem, you'll receive fast, considerate assistance.

My great-grandfather invented the floor sweeper in 1876. Today, BISSELL is a global leader in the design, manufacture, and service of high quality homecare products like your BISSELL vacuum.

Thanks again, from all of us at BISSELL.

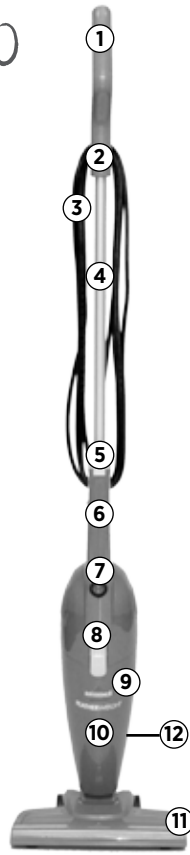


Mark J. Bissell  
Chairman & CEO

Safety Instructions . . . . .	2
Product View . . . . .	4
Operations . . . . .	4-5
Maintenance & Care . . . . .	5
Troubleshooting . . . . .	6
Replacement Parts . . . . .	6
Warranty . . . . .	7
Service . . . . .	7
Consumer Care . . . . .	8

# Product View

- 1 Hand Grip
- 2 Cord Wrap
- 3 Power Cord
- 4 Handle
- 5 Quick Release Handle
- 6 Hand Vacuum Grip
- 7 Power Switch
- 8 Dirt Container Latch
- 9 Filter (inside Dirt Container)
- 10 Dirt Container
- 11 Removable Floor Nozzle
- 12 Date code and serial number



## **WARNING**

Plastic film can be dangerous. To avoid danger of suffocation, keep away from babies and children.

## **WARNING**

Do not plug in your vacuum cleaner until you are familiar with all instructions and operating procedures.

## **WARNING**

To reduce the risk of electric shock, turn power switch off and disconnect polarized plug from electrical outlet before performing maintenance or troubleshooting checks.

# Operations

## How to use your vacuum

Your Featherweight vacuum may be used in three ways. See instructions below for converting your vacuum to best meet each need.

### 1. As a Floor Vacuum:

**a.** Open the latch at the top of the hand vacuum grip and insert handle. Once handle is all the way inserted into the body of the vacuum, press the latch closed to secure the handle in place.

**b.** Attach the floor nozzle by inserting it into the opening at the bottom of the dirt container. Press firmly to secure in place.

### 2. As a Hand Vacuum:

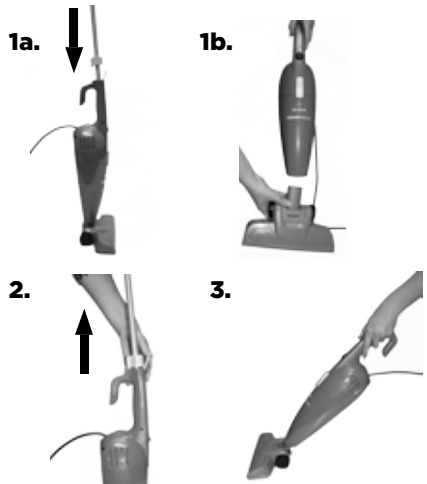
Release the latch from the handle and pull handle away from the unit. Press the latch closed.

### 3. As a Multi-Purpose Vacuum:

The floor nozzle may be used with the hand vacuum to clean large surfaces. To attach the floor nozzle to the hand vac, insert it into the opening at the bottom of the dirt container. Press firmly to secure in place.

## **WARNING**

Do not operate cleaner with damp or wet filters or without vacuum bags and all filters in place.



# Operations

## Power cord storage

1. Turn Vacuum OFF (O).
2. Unplug power cord by grasping the polarized plug, NOT the cord, and disconnect from outlet.
3. Loop power cord around cord wraps on the handle.
4. Clip molded plug to power cord to secure.



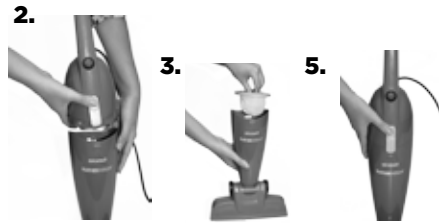
# Maintenance & Care

## Emptying the dirt container

1. Turn Vacuum OFF (O).
2. Hold the vacuum vertically and press the dirt container release latch. Gently pull the dirt container from the hand vacuum.
3. Grip and remove the filter. Empty contents into a waste container.
4. The dirt container may be rinsed with warm water and a mild detergent if needed. The dirt container must be thoroughly dried before replacing.
5. Replace filter. Attach dirt container to vacuum by depressing latch and securely fitting onto hand grip. Make sure dirt container is correctly secured.

## **WARNING**

To reduce the risk of electric shock, turn power switch off and disconnect polarized plug from electrical outlet before performing maintenance or troubleshooting checks.



## Cleaning the filter

The key to maximum performance is having clean filters. Cleaning the filters after each use will help your Featherweight vacuum operate at peak efficiency.

Use only BISSELL replacement filters in your BISSELL Featherweight vacuum.

1. Turn Vacuum OFF (O).
2. Follow the steps above to remove dirt container and filter. To clean the main filter, shake over a waste container until debris is gone. Place the filter back into the dirt container.

**NOTE: After heavy usage, you may clean the filter by washing it gently by hand in warm water and mild dish detergent. Rinse thoroughly and make certain it is completely dry before replacing it. If filter is torn, replace it with a new filter.**

3. Attach dirt container to vacuum by depressing latch and securely fitting onto hand vacuum grip. Make sure dirt container is correctly secured.



# Troubleshooting

## **WARNING**

To reduce the risk of electric shock, turn power switch off and disconnect polarized plug from electrical outlet before performing maintenance or troubleshooting checks.

<b>Problem</b>	<b>Possible causes</b>	<b>Remedies</b>
<b>Vacuum cleaner won't run</b>	Power Cord not firmly plugged in.	Check electrical outlet.
	Blown household fuse or breaker.	Check/replace fuse; reset breaker.
<b>Vacuum cleaner won't vacuum effectively</b>	Filter clogged, wet or dirty.	Follow instructions for cleaning Filter.
	Dirt Container clogged.	Follow instructions for emptying Dirt Container.
<b>Dust blows out of air vent</b>	Filter not properly secured to filter frame.	Follow instructions for replacing Filter above.

**Please do not return this product to the store.**

Other maintenance or service not included in the manual should be performed by an authorized service representative.

Thank you for selecting a BISSELL product.

**For any questions or concerns, BISSELL is happy to be of service. Contact us directly at 1-800-263-2535.**

# Warranty

If you need additional instruction regarding this warranty or have questions regarding what it may cover, please contact BISSELL Consumer Care by E-mail or telephone as described below.

## Limited One-Year Warranty

Subject to the \*EXCEPTIONS AND EXCLUSIONS identified below, upon receipt of the product BISSELL will repair or replace (with new or remanufactured components or products), at BISSELL's option, free of charge from the date of purchase by the original purchaser, for one year any defective or malfunctioning part.

See information on "If your BISSELL product should require service".

This warranty applies to product used for personal, and not commercial or rental service. This warranty does not apply to fans or routine maintenance components such as filters, belts, or brushes. Damage or malfunction caused by negligence, abuse, neglect, unauthorized repair, or any other use not in accordance with the User's Guide is not covered.

BISSELL IS NOT LIABLE FOR INCIDENTAL OR CONSEQUENTIAL DAMAGES OF ANY NATURE ASSOCIATED WITH THE USE OF THIS PRODUCT. BISSELL'S LIABILITY WILL NOT EXCEED THE PURCHASE PRICE OF THE PRODUCT.

## \*EXCEPTIONS AND EXCLUSIONS FROM THE TERMS OF THE LIMITED WARRANTY

THIS WARRANTY IS EXCLUSIVE AND IN LIEU OF ANY OTHER WARRANTIES EITHER ORAL OR WRITTEN. ANY IMPLIED WARRANTIES WHICH MAY ARISE BY OPERATION OF LAW, INCLUDING THE IMPLIED WARRANTIES OF MERCHANTABILITY AND FITNESS FOR A PARTICULAR PURPOSE, ARE LIMITED TO THE ONE YEAR DURATION FROM THE DATE OF PURCHASE AS DESCRIBED ABOVE.

# Service

## If your BISSELL product should require service:

Visit [BISSELL.ca](http://BISSELL.ca) or contact BISSELL Consumer Care to locate a BISSELL Authorized Service Center in your area.

If you need information about repairs or replacement parts, or if you have questions about your warranty, contact BISSELL Consumer Care.

## Website or E-mail:

[www.BISSELL.com](http://www.BISSELL.com)

## Or Call:

BISSELL Consumer Care

1-800-237-7691

Monday - Friday 8am - 10pm ET

Saturday 9am - 8pm ET

Sunday 10am - 7pm ET

# BISSELL Consumer Care

For information about repairs or replacement parts, or questions about your warranty:

## Call:

**BISSELL Consumer Care**  
**1-800-237-7691**

Monday - Friday	8 am - 10 pm ET
Saturday	9 am - 8 pm ET
Sunday	10am - 7pm ET

## Visit the **BISSELL** website: [www.BISSELL.com](http://www.BISSELL.com)

When contacting BISSELL, have model number of cleaner available.

Please record your Model Number: \_\_\_\_\_

Please record your Purchase Date: \_\_\_\_\_



©2016 BISSELL Homecare, Inc.  
Grand Rapids, Michigan  
All rights reserved. Printed in China  
Part Number 161-0513 11/16  
Visit our website at: [www.BISSELL.com](http://www.BISSELL.com)