

**24-Hour
Repeating Cycle**

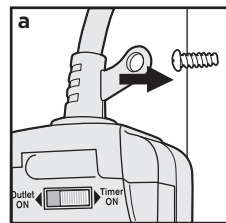
Heavy Duty Push-Pin Timer

Model: TNO24111

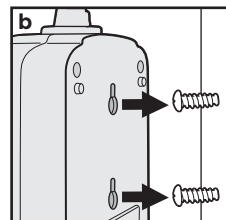
STEP-BY-STEP INSTRUCTIONS

1. INSTALL TIMER to a vertical flat surface close to a properly installed outdoor-rated grounded receptacle

a. Using a screw or hook (not included), secure the MOUNTING TAB at the top of the timer to a wall or post.



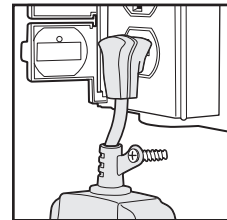
b. For a more secure mounting, use the two MOUNTING HOLES on the back of the timer.



- Create a mounting template by placing a sheet of paper over the back of the timer and punching holes through the paper where the mounting holes are located on the timer.
- Temporarily secure the mounting template to the flat surface where the timer is to be mounted.
- Drill two 3/32 inch pilot holes where indicated on the mounting template.
- Insert two #6 sheet metal screws (not included), leaving screw heads protruding 1/8 inch from the surface.
- Place the timer over the screw heads and push down to lock into place.

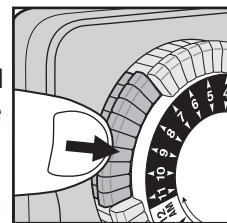
2. Plug timer into an ELECTRICAL OUTLET

Use an outdoor-rated three-pronged grounded electrical outlet. Do not use extension cords to connect the timer to the power source.



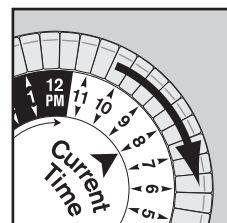
3. Set a period of time for the timer to be "ON"

Locate the gray pins and push them DOWN at the marked times when the attached device is to be "ON". Each pin represents a 30 minute time interval.



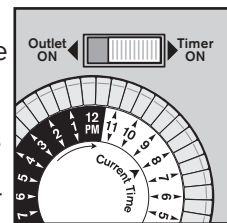
4. Set the "CURRENT TIME"

Rotate the entire gray push-pin dial clockwise until the arrow marked "CURRENT TIME" aligns with the current time of day on the dial. "AM" hours are highlighted in WHITE. "PM" hours are highlighted in BLACK.



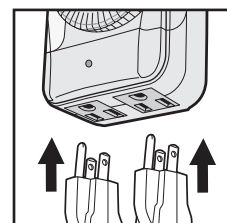
5. Set "BYPASS SWITCH"

When the switch is in the "TIMER ON" position, timer will automatically turn the attached device on and off. When the switch is in the "OUTLET ON" position, timer will bypass the programming and the attached device will remain on.



6. Attach up to TWO DEVICES to the timer

Plug the devices into the outlets on the bottom of the timer.



HELPFUL TIPS

- This timer repeats the same settings daily.
- To push down or pull up the gray pins, use your finger or the tip of a small non-metallic insulated tool, such as a pencil or toothpick.
- Set up to 48 different "ON" and "OFF" times in a 24 hour period by the positioning of the gray pins. Pins pressed down represent the 'ON' time. Pins in the up position represent 'OFF' time.
- Switching the timer to "OUTLET ON" will bypass programming, however, the timer dial will continue to rotate and maintain the current time.
- This timer is weather-resistant and rated for Outdoor Use. The timer will function outdoors when installed and operated as outlined in this manual.
- The "Power" indicator will glow red when the timer programming is activated and power is being provided to attached devices.

IN CASE OF POWER FAILURE

Timer will stop operating if the power goes out. Once power is restored, reset the time of day as explained in Step 4 of the instructions.

⚠ WARNING

Risk of Electric Shock

Keep children away. Unplug timer before cleaning. Fully insert plug. Do not use near standing water.

Risk of Fire

Do not use to control appliances that contain heating elements (cooking appliances, heaters, irons, etc.). Do not exceed electrical ratings.

⚠ AVERTISSEMENT

Risque de choc électrique


Garder hors de portée des enfants. Débrancher la minuterie avant de nettoyer. Insérer complètement la fiche. Ne pas utiliser près de l'eau stagnante.

Risque d'incendie

Ne pas utiliser pour contrôler les appareils contenant des éléments chauffants (équipements de cuisine, radiateurs, fers à repasser, etc.). Ne pas excéder la capacité électrique.

SAFETY INFORMATION & SPECIFICATIONS

THIS TIMER IS A "GROUNDED" DEVICE

 The male plug contains a ground pin and is only intended for use with a three-pronged grounded outlet.

THIS TIMER IS FOR USE WITH A 125VAC POWER SOURCE.

125VAC / 60Hz

DO NOT ATTACH A DEVICE THAT EXCEEDS THE UNIT RATINGS:

15A / 1875W Resistive (General Purpose)

10A / 1250W Tungsten (Incandescent)

1/2 HP (Horsepower Motor)

LIMITED 1 YEAR WARRANTY

Prime warrants this product to be free from manufacturing defects for a period of one year from the original date of purchase ("warranty period"). This warranty is limited to the repair or replacement of this product only and Prime is not liable for any consequential or incidental damage to other products that may be used with this unit. This warranty is effective only if such unit is returned to Prime not later than thirty (30) days after the expiration of the warranty period. Warranty is void if damage is due to neglect, misuse, alteration, modification, improper installation, or repair by other than Prime. This warranty is in lieu of all other warranties express or implied. Some states do not allow limitations on how long an implied warranty lasts or permit the exclusion or limitation of incidental or consequential damages, so the above limitations may not apply to you.

It is our experience that a product that fails prematurely due to a manufacturing defect in materials or workmanship, will generally do so very early in the product's life cycle, often the first or second time the product is used. Products that are returned for warranty inspection after months or years of continuous reliable service are usually the result of normal wear and tear, which is not considered a defect in materials or workmanship and therefore is not covered by the warranty.

This warranty gives you specific rights, and you may also have other rights which vary from state to state. If unit should prove defective within the warranty period, return within the time period set forth above prepaid with the original purchase receipt to:

Prime Wire & Cable, Inc.
ATTN: Timer Warranty
280 Machlin Court
City of Industry, CA 91789

Service - (888) 445-9955 • www.primewirecable.com